

TOWN CENTER AT ARUNDEL PRESERVE

7799 ARUNDEL MILLS BLVD
HANOVER, MD

CLASS A OFFICE
LEED GOLD DESIGNED
MIXED-USE PROJECT



Live

Work

Shop

Play

Project Under Construction



The Town Center at ARUNDEL PRESERVE is a Smart-Growth project of urban character that will comprise approximately 1.3 million square feet of LEED Gold-designed, mixed-use development. The Town Center is one component of ARUNDEL PRESERVE, a 268 acre mixed-use community located at the center of the Baltimore-Washington Corridor with immediate access to I-295/BW Parkway and is a part of the larger 1,100 acre Arundel Mills development.

Town Center at ARUNDEL PRESERVE includes:

- ◇ LEED Gold Designed
- ◇ 171,180 SF State of the Art Class A Office
- ◇ 150 Room Luxury Hotel with 10,000 SF of Conference/Meeting Space
- ◇ 242 Luxury Apartment Homes
- ◇ 45,000 SF of Street Level Retail Amenities

Distances from ARUNDEL PRESERVE To:

- | | |
|---------------------|----------|
| ◇ Ft. Meade and NSA | 2 Miles |
| ◇ BWI Airport | 4 Miles |
| ◇ Baltimore CBD | 11 Miles |
| ◇ Washington CBD | 25 Miles |
| ◇ Annapolis | 18 Miles |

FOR LEASING INFORMATION,
CONTACT:

JIM LIGHTHIZER
443-883-8171

JLIGHTHIZER@CREGLLC.COM

EDWARD BRADY
443-883-8170

EBRADY@CREGLLC.COM



CHESAPEAKE REAL ESTATE GROUP, LLC

(410) 787. 8799 • WWW.CREGLLC.COM

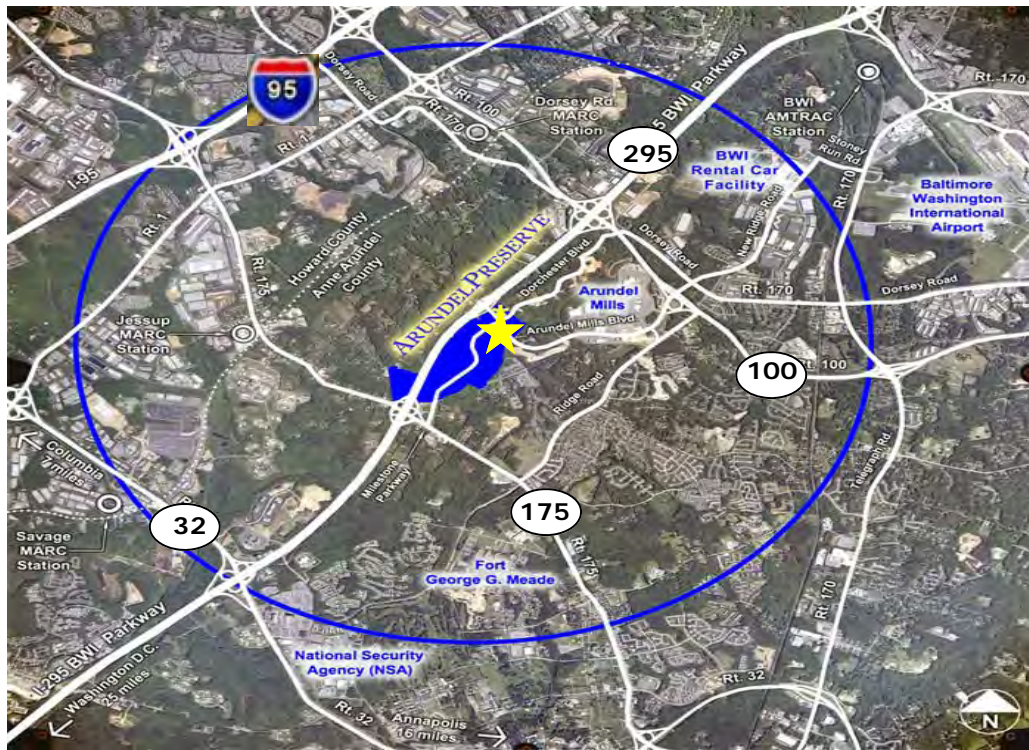
1344 ASHTON ROAD • SUITE 105 • HANOVER • MARYLAND • 21076

TOWN CENTER AT ARUNDEL PRESERVE

7799 ARUNDEL MILLS BLVD
HANOVER, MD

CLASS A OFFICE
LEED GOLD DESIGNED
MIXED-USE PROJECT

ARUNDEL PRESERVE ILLUSTRATIVE MASTER PLAN



**FOR MORE
INFORMATION
CONTACT:**

JIM LIGHTHIZER
443.883.8171

ED BRADY
443.883.8170



CHESAPEAKE
Real Estate Group, LLC

Live

Work

Shop

Play

Although all information furnished regarding property for sale, rental or financing is from sources deemed reliable, such information has not been verified, and no express representation is made nor is any to be implied as to the accuracy thereof, and it is submitted subject to errors, omissions, change of price, rental or other conditions, prior sale, lease or financing, or withdrawal without notice.

1344 ASHTON ROAD, SUITE 105 • HANOVER, MARYLAND 21076 • WWW.CREGLLC.COM